

PRODUCT CATALOGUE

2024 - 01

 Q Access



ACCESSORIES

VOLKSWAGEN AMAROK 2023

TESSERA4
OFF ROAD ACCESSORIES
4x4



TABLE OF CONTENTS

HARDTOPS

4 - 8



TONNEAU COVERS

9



BEDSLIDES

11



ROLL COVERS

12 - 14



STAINLESS STEEL

15



LIGHTING

16



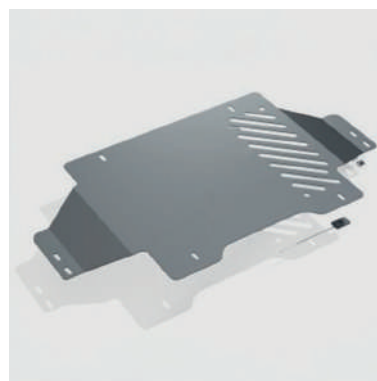
ACCESSORIES

16-17



SKIDPLATES

18



Precision in every detail Passion in every mile!

Q-IST leverages over two decades of expertise in the automotive pick-up market. Renowned for their dedication to quality and innovation.

They specialise in producing premium hardtops, utilising advanced hand lay-up fiberglass techniques to achieve unparalleled surface quality and exceptional durability, resilient against the most demanding environments.

Compatible with all major car brands and available in a wide range of colours, Q-IST offers bespoke solutions tailored to meet your specific needs.

DISCOVER THE Q-IST DIFFERENCE TODAY!



Q IST

HARDTOPS - Q-IST



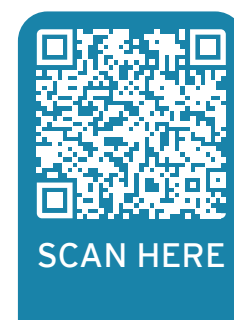
Q-IST Elysium Pop-out Windows Double Cab

- E-mark approved tinted glass
 - Painted in vehicle colour
 - Roof rails
 - Interior led light
 - Interior carpet lining
 - Spoiler painted in vehicle colour
 - Easy installation with bolt fixing system
 - Rear door with capacitive touchpad
 - water and dust resistant IP56K
 - UV resistance SAEJ2527
 - temperature rating -40°C + 105°C
 - Audible buzzer for Lock/unlock
 - temperature rating -40°C + 85°C
 - Special water drain system
 - Central locking system with OE remote
 - Pop-out windows rear left and right
 - Front drop down window
 - Rear window heater
 - Rear slam door
- Max. 100 KG roof load

Colours

| | | | | | | | |
|---|---|---|---|---|--|---|---|
|  |  |  |  |  |  |  |  |
| 051047 | 051048 | 051049 | 051045 | 051051 | 051050 | 051046 | 051044 |
| Bright Beige Metallic L1F7 | Bright Blue Metallic L4F4 | Clear White L9F0 | Dark Grey Metallic L2F7 | Deep Red Metallic L3F3 | Light Grey Metallic L3F7 | Mid Blue Metallic L1F4 | Midnight Black Metallic L2F9 |

Check if your product is in stock



HARDTOPS - Q-IST

Q-IST Karuna Fold-up Panels Double Cab



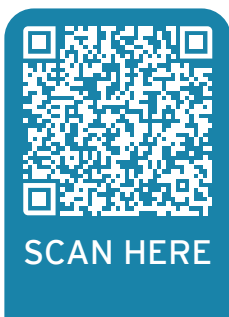
- E-mark approved tinted glass
- Painted in vehicle color
- Roof rails
- Interior led light
- Interior carpet lining
- Easy installation with bolt fixing system
- Rear door with capacitive touchpad
 - water and dust resistant IP56K
 - UV resistance SAEJ2527
 - temperature rating 40°C + 105°
- Audible buzzer for lock/unlock
 - temperature rating -40°C + 85°C
- Special water drain system
- Central locking system with OE remote
- Front drop down window
- Rear window heater
- Rear slam door
- Side fold up panels with stabilus struts
- Remote switches for side panels

- Max. 100 KG roof load

Colours

| | | | | | | | |
|-------------------------------|------------------------------|---------------------|----------------------------|---------------------------|-----------------------------|---------------------------|---------------------------------|
| | | | | | | | |
| 057346 | 057347 | 057348 | 057344 | 057350 | 057349 | 057345 | 057343 |
| Bright Beige Metallic L1F7 | Bright Blue Metallic L4F4 | Clear White L9F0 | Dark Grey Metallic L2F7 | Deep Red Metallic L3F3 | Light Grey Metallic L3F7 | Mid Blue Metallic L1F4 | Midnight Black Metallic L2F9 |

Check if your product is in stock





Since 1982, ALPHA has been a leading manufacturer of fiberglass hardtops and 4x4 accessories. They produce complete hardtops, including the fiberglass shell, metal parts, and glass components, all fabricated in-house.

This vertical integration guarantees the highest standards of product quality. ALPHA's success is driven by their use of premium materials and extensive industry expertise to innovate and develop new products.

The ALPHA TYPE E+ AIR, an evolution of the renowned TYPE E+, is an Q-ACCESS EXCLUSIVE and only available through Q-Access and its partners.



**A Leading manufacturer of
fiberglass hardtops since 1982**

HARDTOPS - ALPHA

Alpha Type E+ Air Double Cab

- E-mark approved tinted glass
- Painted in vehicle color
- Integrated roof rails
- Interior led light
- Interior carpet lining
- Easy installation with six clamps
- Rear door with micro-switch
- Special water drain system
- Central locking system with OE remote
- Pop-out windows rear left and right
- Front drop down window
- Rear window heater
- Rear slam door



Crossbar 011727

Upgrade your hardtop with the crossbar and adaptor for the Type E+ Air



Colours

| | | | | | | | |
|---|---|---|---|---|--|---|---|
|  |  |  |  |  |  |  |  |
| 013458 | 013459 | 013460 | 013461 | 013462 | 013463 | 013465 | 013466 |
| Bright Beige Metallic L1F7 | Bright Blue Metallic L4F4 | Clear White L9F0 | Dark Grey Metallic L2F7 | Deep Red Metallic L3F3 | Light Grey Metallic L3F7 | Mid Blue Metallic L1F4 | Midnight Black Metallic L2F9 |

Check if your product is in stock



SCAN HERE

HARDTOPS - ALPHA

Alpha CMX Double Cab

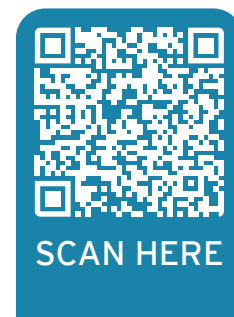
- E-mark approved tinted glass
- Painted in vehicle color
- Roof rails
- Interior led light
- Interior carpet lining
- Spoiler painted in vehicle colour
- Easy installation with six clamps
- Rear & side doors with manual handle
- Special water drain system
- Central locking system with OE remote
- Front drop down window
- Rear window heater
- Rear slam door
- Cross bars included
- Side fold up panels with stabilus struts



Colours

| | | | | | | | |
|-------------------------------|------------------------------|---------------------|----------------------------|---------------------------|-----------------------------|---------------------------|---------------------------------|
| | | | | | | | |
| 057074 | 057075 | 057076 | 057077 | 057078 | 057079 | 057080 | 057081 |
| Bright Beige Metallic L1F7 | Bright Blue Metallic L4F4 | Clear White L9F0 | Dark Grey Metallic L2F7 | Deep Red Metallic L3F3 | Light Grey Metallic L3F7 | Mid Blue Metallic L1F4 | Midnight Black Metallic L2F9 |

Check if your product is in stock



TONNEAU COVERS

Alpha SC-Z Sportcover Double Cab

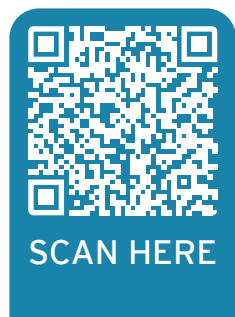
- Painted in vehicle colour
- Interior led light
- Interior carpet lining
- Manual handle
- Central locking system with OE remote
- Easy installation with six clamps
- 3rd Brake Light



Colours

| | | | | | | | |
|---|---|---|---|---|--|---|---|
|  |  |  |  |  |  |  |  |
| 057382 | 057383 | 057384 | 057385 | 057386 | 057387 | 057388 | 057389 |
| Bright Beige Metallic L1F7 | Bright Blue Metallic L4F4 | Clear White L9F0 | Dark Grey Metallic L2F7 | Deep Red Metallic L3F3 | Light Grey Metallic L3F7 | Mid Blue Metallic L1F4 | Midnight Black Metallic L2F9 |

Check if your product is in stock



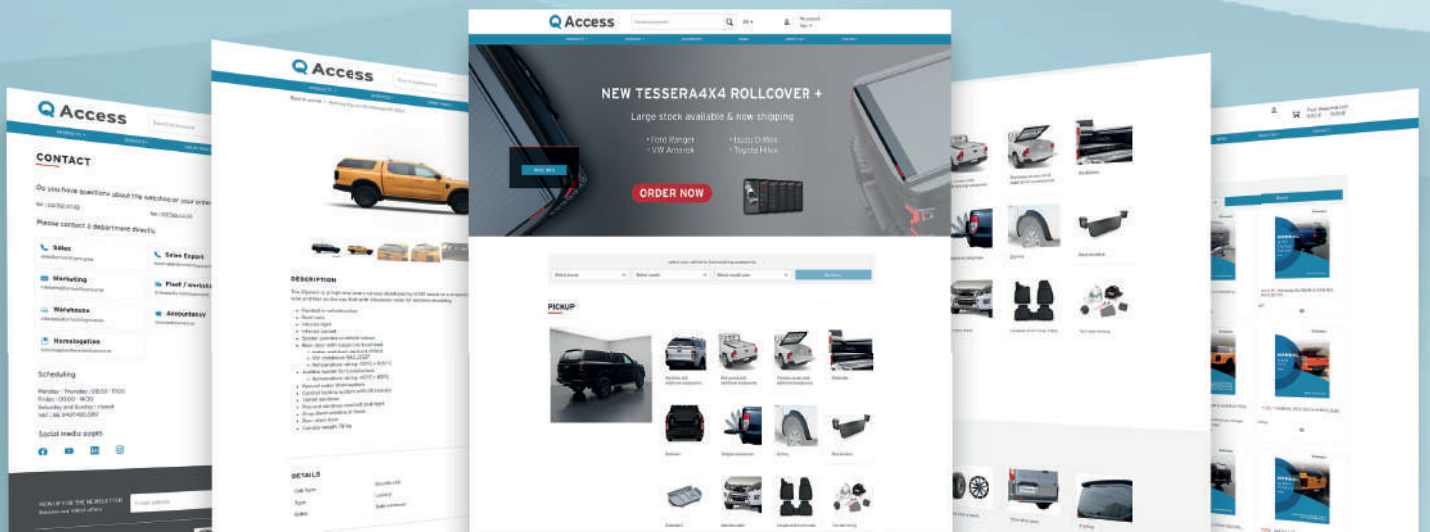
Discover over 4,000 products on the Q-Access website.

Join today to unlock access to real-time prices and stock levels. With your personal log-in, you can easily place orders, submit warranty claims, and review our competitive prices all with a single click.

Enjoy the convenience of adding multiple delivery addresses and creating unlimited accounts for your company.

**Q-ACCESS: YOUR LEADING CAR ACCESSORIES SUPPLIER,
AVAILABLE AT YOUR FINGERTIPS!**

Visit the Q-Access webshop + 4.000 car accessories

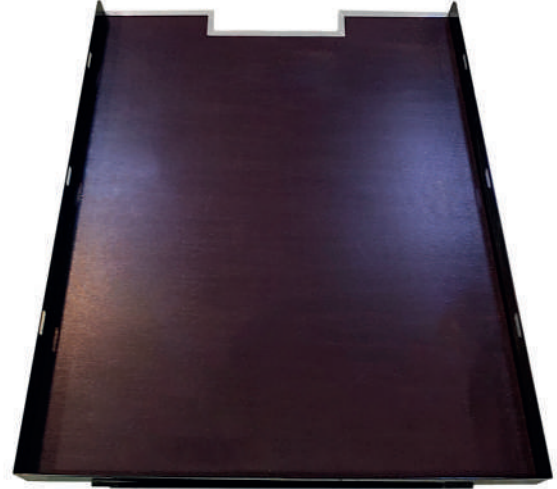


BEDSLIDES

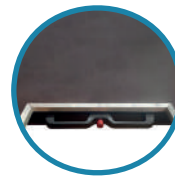
Bedslide 013486

Pull, Load, Slide & Drive with Ease.

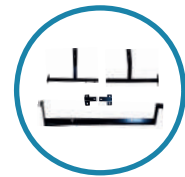
- Optimised design for maximum space utilisation
- Dimensions: 138.0 cm (length) x 119.5 cm (width)
- Best value for money on the market!
- Safe and easy-to-use recessed handles
- Smooth one-hand push-button opening
- Multiple (3-stop) extension positions
- Anti-slip top layer in composite wood
- 500 kg load capacity (full-in)
- 250 kg load capacity (full-out)
- Integrated cut-outs for securing goods
- Four integrated heavy-duty metal bearings
- Mounts to original points
- Mounting kit included



Easy-to-use handle



Mounting kit included



Anti-slip toplayer



500 KG load capacity

Check if your product is in stock



SCAN HERE



ROLL COVERS

Tessera 4X4 - Roll Cover SE Manual retractable

[057795 - Roll Cover SE VW Amarok DC '23 + Life/Style](#)

[057797 - Roll Cover SE VW Amarok DC '23 + Aventura with OEM spoiler](#)



Tessera SE, the next-generation aluminum roller lid shutter, a revolutionary, versatile, and durable product featuring five patents.

Handcrafted with a 3-year warranty on materials and workmanship, it offers ease of use, secure installation, and exceptional load protection.

The Tessera SE offers advanced features such as a unique locking system, robust and insulated slats, efficient drainage, and an aerodynamic design to enhance fuel economy.

With easy, drill-free installation, it fits vehicles with or without bed liners.

Tessera 4X4 - Roll Cover Plus Manual Retractable | Electric Retractable (E-KIT) | Spring-Assisted (S-KIT)

[055737 - Roll Cover\(+\) Plus VW Amarok DC '23 + Life/Style](#)

[057285- Roll Cover\(+\) Plus VW Amarok DC '23 + Aventura with OEM spoiler](#)

Tessera Roll+ roller lid shutter, featuring eight patents. This innovative product offers unparalleled versatility, durability, and convenience.

With a 3-year warranty, AI controller board, mobile app integration, and multiple operation modes, the Tessera Roll+ ensures secure, smooth, and efficient usage.

Key features include obstacle detection, advanced drainage systems, easy no-drill installation, and an aerodynamic design for improved fuel economy.

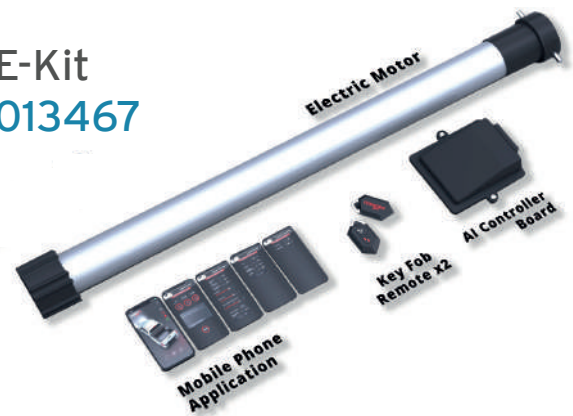


ROLL COVERS

S-Kit 051099



E-Kit 013467



Easily upgrade your Roll Cover(+) Plus from the basic version to the "SPRING" model by integrating the S-Kit, with no tools or specialized knowledge required. Optimise your roll-cover's functionality with spring-assisted motion. The incorporation of a specialized spring ensures a smooth, silent, and secure automatic rewind of the roll into the canister. The spring mechanism is securely housed within the durable aluminum central shaft (Direct Drive System), ensuring it occupies no additional space in your vehicle's trunk load area.

Effortlessly upgrade your basic Roll Cover(+) Plus to the "ELECTRIC" version by integrating the E-Kit, with no need for tools or specialized knowledge. The advanced E-Kit features an AI controller board that requires no calibration, making it the only motor system on the market that automatically adjusts to the specific trunk body length of each vehicle. It is specially programmed for a smoother opening and closing experience and is equipped with sensors that detect obstacles. Everything can be controlled via the available mobile app.

Basic control:

- OPEN/CLOSE/PAUSE functions
- ON/OFF led light bars (red bar, logo & white bar)
- ON/OFF emergency extra alarm system
- Obstacle alerts

Lights configurations:

- ON/OFF emergency hazard lights function
- ON/OFF function of red led light bar as extra brake light
- ON/OFF function of red led light bar as extra beam light
- Brightness control of red led light bar and logo
- Adjust red led light bar brightness with your truck's brake lights and beam lights
- Brightness control of internal white led light bar
- Adjust internal white led light bar brightness with your needs of your load
- Timer control for all LED lights
- ON/OFF "One Touch" function of rear slat as control button

Accessibility (voice commands) configurations:

- Voice Commands activation for all basic commands of your Tessera Roll+ (Open/Pause/Close & Lights): Available for Siri in iOS devices & Google Assistant in Android devices

Security configurations:

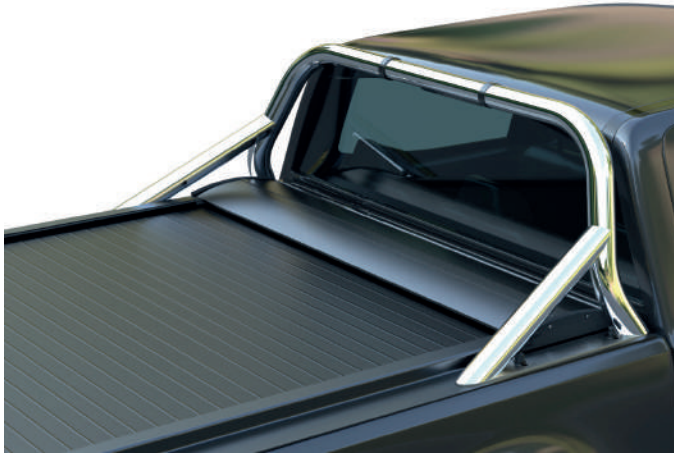
- Tessera Roll+ close Reminder: Reminder option if Tessera roll+ is left open for 15, 30, 60, 90 or 120 minutes
- Bluetooth PIN change
- Double-Click function: Enabling this command necessitates a double-press action on the open/close button of your key fobs to initiate the associated directives. Please be advised that this functionality is accessible exclusively with firmware version 2.17 and later
- Bluetooth Disable
- Remote Control Pairing
- Cleared Remote Controls
- Check firmware

Maintenance configurations:

- 3 info circles: ROLL open/close times, White led light bar operation time, Red led light bar operation time
- Maintenance pop up alerts:
 - Blocked water in canister's area
 - Clean & Lubricate side rails parts
 - Electric Motor Failure.
 - Share operation log file



ROLL COVERS



Roll bar Tessera 4X4 chrome 057295

Chrome-look stainless steel, sport design, one-and-a-half leg roll bar, precision-engineered from Ø65mm pipe.

Detached for perfect adaption and custom-tailored to the exact dimensions of your VW Amarok '23.

Specially designed roll bar for Tessera Roll+ and Tessera SE.

Roll bar Tessera 4X4 black 057296

Matt-black stainless steel, Sport Design one-and-a-half leg roll bar, precision-engineered from Ø65mm pipe.

Detached for perfect adaption and custom-tailored to the exact dimensions of your VW Amarok '23.

Specially designed roll bar for Tessera Roll+ and Tessera SE.




Roll bar Tessera 4X4 No-drill installation kit 057288

Specially designed roll bar kit for easy installation in the built-in "T-Slots" of Tessera Roll+ and Tessera SE, requiring no drilling. Suitable for light accessory use with a maximum load capacity of 70kg.

Compatible with 057295 & 057296.



STAINLESS STEEL

Pushbar with
crossbar chrome
064703



Pushbar with
crossbar black
064704



Pushbar
chrome
064705



Pushbar
black
064706



Low spoiler bar
with axle plate chrome
064707



Low spoiler bar
with axle plate black
064586



LIGHTING

Single LED Light Bar Kit
36 LED Black Edition
064708



Single LED Light Bar Kit
12 LED Black Edition
064709



Single LED Light Bar kit
9 LED Black Edition
064710



Dual LED Light Bar Kit
3 LED Black Edition
064711

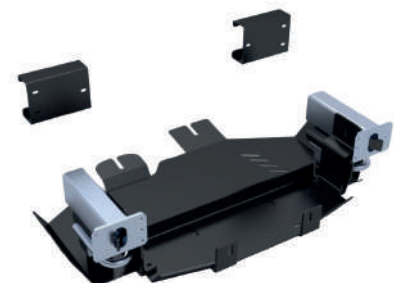


Dual LED Light Bar Kit
12 LED Black Edition
064712



PICK UP ACCESSORIES

Hidden winch mounting plate*
001756



*Compatible with Warn-winches EVO 8, 10 & 12

PICK UP ACCESSORIES

Sliding crossbars (set) 001909

Compatible with

- Elysium
- Karuna Fold-up Panels
- Karuna Closed



Rubber carpets 057052



Flange neck fixed towbar 051054



Wiring kit 13 pins 014173



Tailgate assistance 057642

- Controls and secures the opening of the drop side
- Reduces the weight of the sideboard by 95%
- Eliminates potential damage that could be caused by the tailgate falling
- Easy, quick and drilling-free installation kit

SKIDPLATES

Engine bay
steel
061594



Differential cover
steel
061588



Fuel tank
steel
061590



Transmission case
steel
061592



Steering rods
steel
061596



Engine bay
aluminium
061595



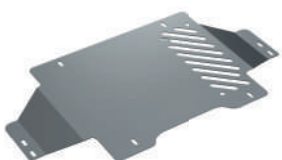
Differential cover
aluminium
061589



Fuel tank
aluminium
061591



Transmission case
aluminium
061593



Steering rods
aluminium
061597



Your dealer:



HQ - workshop - showroom:
Veerstraat 203,
2240 Zandhoven Belgium



Warehouse:
Delften 23, Hal 71-72,
2390 Westmalle Belgium



+32 3 312 07 42



sales@q-mobilitygroup.be



www.q-access.be

**Q Mobility
Group**